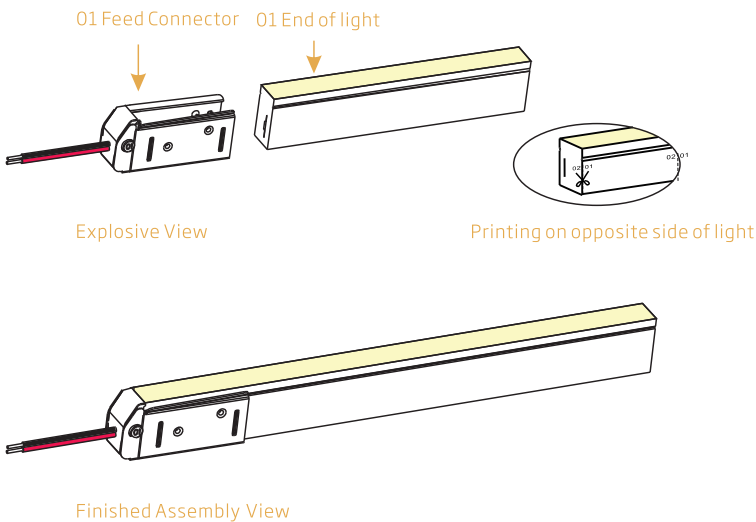


FXN 1121|FLEXIBLE NEON

SWIVEL FRONT CONNECTOR

Please ignore these steps if the front connector has been assembled before delivery.

- Note:
1. Never wet the assembly units or assemble with wet hands;
 2. Please use the tools correctly;
 3. Please pay attentions to personal security when using tools.
 4. Failure to properly seal and assemble as instructed may void warranty.
 5. Repeated assembly or reuse of the connector may result in waterproof failure.



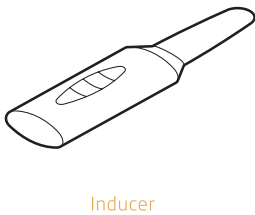
1. Components of Front Connector

Note:

The light ends are marked with either an 01 or an 02. Always make sure to use an identically labeled connector for the appropriate direction.



2. Tools

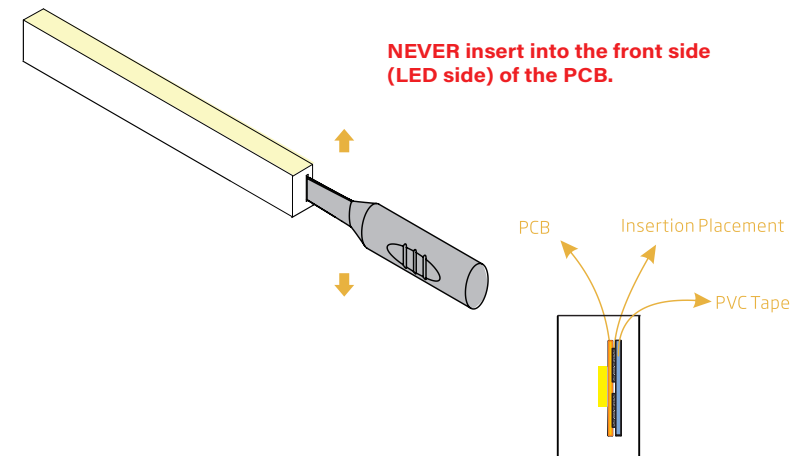


FXN 1121 FLEXIBLE NEON

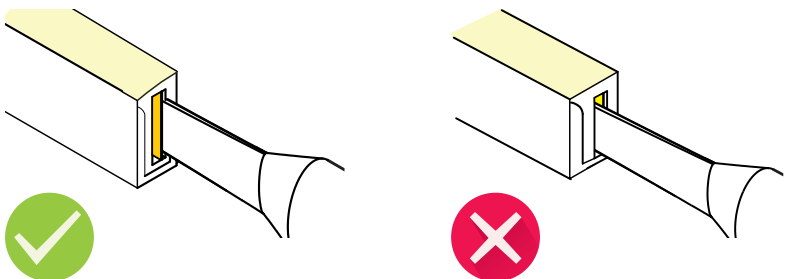
SWIVEL FRONT CONNECTOR

2.Installation Steps

2.1 Inducing a Cavity for Feed Connector

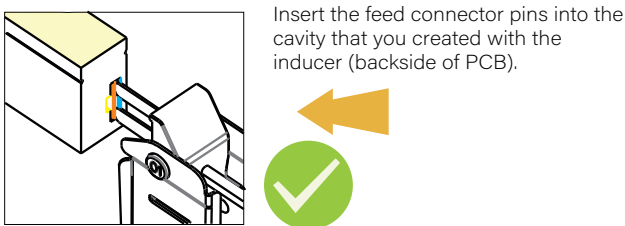


Insert the inducer to the backside of PCB around 10 ≈ 12mm, move the inducer up and down 3 ≈ 5 times gently to create a small cavity.



2.2 Inserting the Feed Connector

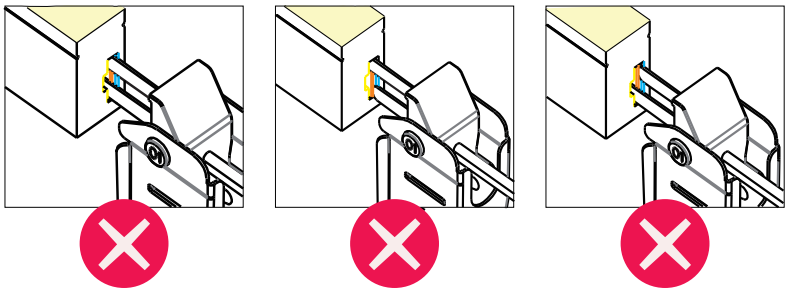
Rotate the feed connector pin to make its orientation vertical and insert it into the backside of PCB tightly.



Insert the feed connector pins into the cavity that you created with the inducer (backside of PCB).

The silicone gasket attached to on the feed connector.

The following operations are prohibited:



Insert into the front side of the PCB

Insert crosswise into the PCB

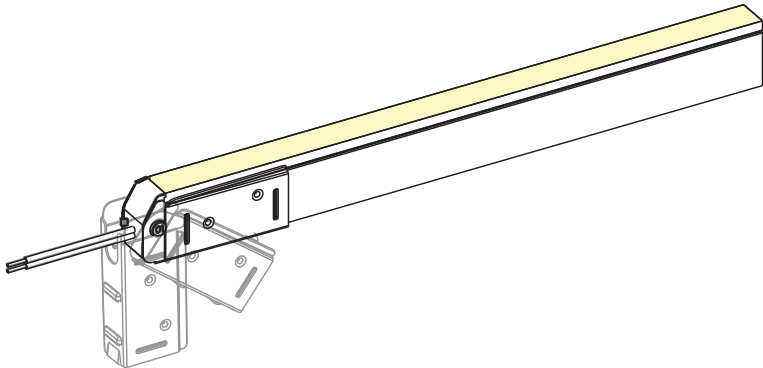
Insert corosswise into the PCB

FXN 1121 | FLEXIBLE NEON

SWIVEL FRONT CONNECTOR

2.3 Rotate back till the light seat into the steel plate tightly

Apply power to test light after assembly



FXN 1121 FLEXIBLE NEON

SWIVEL END CAP

Please ignore these steps if the end cap has been assembled before delivery.

Note:

1. Never wet the assembly units or assemble with wet hands;
2. Please use the tools correctly;
3. Please pay attentions to personal security when using tools.
4. Failure to properly seal and assemble as instructed may void warranty.
5. Repeated assembly or reuse of the connector may result in waterproof failure.

1. Components of End Cap

2. Installation Steps

2.1 Rotate the end cap clockwise by 90 degrees.

2.2 Installation of Tail Plug

Put the light end and end cap together and rotate it to seat into the steel plate horizontally. Slide the light to the end cap and make sure they are attached tightly.

